

# CONTRACTOR DUTY TUB



Subsidiary of Federal Signal Corporation

## SPECIFICATIONS

FLOOR SHEET	3/16" BUTT WELDED
CROSSMEMBERS	3" STRUCTURAL CHANNEL 4.1 LBS/FT 16" ON CENTERS
LONG RAILS	2" x 6" x 1/4" TUBING
REAR WHEELS	8" DIAMETER x 10" WIDE <i>WITH GREASE ZERK</i>
SIDE SHEET	10 GAUGE
TOP RAILS	3" x 4" x 7 GAUGE TUBING (4 x 4 x 1/4" over 16 ft)
BULKHEAD SHEET	10 GAUGE
PUSH PLATE	26" x 16" x 3/16"
BULL NOSE	SOLID 1 1/4" PLATE BURNOUT
NOSE ROLLERS	HEAVY DUTY MACHINED 4" DIAMETER x 6" <i>WITH GREASE ZERK</i>
HOOK PLATE	23" x 15" x 3/4"
TAIL GATE SHEET	10 GAUGE
TAIL GATE FRAME	VERTICAL 3" x 4" x 7 GAUGE TUBING
REAR CORNER POST	3 1/2" x 7" x 3/16" FORMED
HINGES	HEAVY DUTY <i>WITH GREASE ZERK</i> (THREE ON 54" OR HIGHER SIDES EXCEPT FOR BARN DOORS)
LATCHES	VERTICAL LIFT HANDLE
PAINT	INTERIOR/EXTERIOR SOLVENT BASED PRIME EXTERIOR SOLVENT BASED TOP COAT (COMPLETE PAINT OPTION AVAILABLE)



### STANDARD PAINT COLORS

*Custom colors may result in increased cost and lead times.*

BLACK



BUCKS® RED



MACK GREEN



VALVOLINE BLUE





# CONTAINER OPTIONS

*Options may result in increased cost and lead times.*



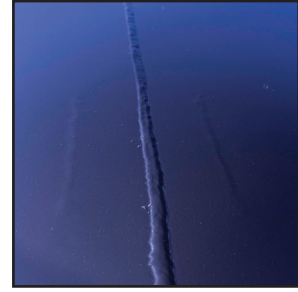
DUMP GATE



BARN DOOR GATE



FRONT OUTRIGGERS



FULLY WELDED



LADDER (ON FRONT)



TARP (MANY STYLES AVAILABLE)



SEALED GATE

## STANDARD DIMENSIONS

*Containers can be manufactured to customer specified dimensions and may result in increased costs and lead times.*

<u>Yardage</u>	<u>Floor Length</u>	<u>Inside Height</u>	<u>Width</u>	<u>Estimated Weight</u>
10	10'	48"	88" Inside at Top, 69" Inside at Bottom	2900 lbs
12	12'	48"	88" Inside at Top, 69" Inside at Bottom	3200 lbs
15	14'	52"	88" Inside at Top, 69" Inside at Bottom	3600 lbs
20	16'	60"	88" Inside at Top, 69" Inside at Bottom	4300 lbs
20	22'	44"	88" Inside at Top, 69" Inside at Bottom	4800 lbs
25	22'	54"	88" Inside at Top, 69" Inside at Bottom	5100 lbs
30	22'	64"	88" Inside at Top, 69" Inside at Bottom	5400 lbs
35	22'	74"	88" Inside at Top, 69" Inside at Bottom	5800 lbs